



College of Micronesia – FSM
Spring 2014 Semester Data Summary

Institutional Research & Planning Office
 Department of institutional Effectiveness and Quality Assurance
rschplanning@comfsm.fm
 June 2014

The following information summarizes Spring semester 2014 enrollment and achievement data for the College of Micronesia – FSM. Comparison data is also provided for a number of data sets from Spring Semester 2010 to 2013 data. For additional information please contact the Institutional Research and Planning Office at Email: rschplanning@comfsm.fm Phone: (691) 320-2480 ext. 119 or via the College Website: <http://www.comfsm.fm/irpo/>.

Contents

Enrollment and Credits Spring 2014	1
Full Time Students, Gender and State of Origin	2
Enrollment and Credits Comparison Spring 2010 to 2014	3
Enrollment by State of Origin Spring 2010 to 2014	4
Full Time Students Comparison Spring 2010 to 2014.....	4
Section Data	5
Course Completion and Withdrawal Rates Spring 2010 to 2014	6
Academic Standing.....	6
Graduates Spring 2014.....	7
FSM Fisheries and Maritime Institute (FMI)	8
Figure 1 Enrollment & Credits Spring 2014.....	1
Figure 2 Enrollment by Full Time, Gender and State of Origin Spring 2014	2
Figure 3 Enrollment by Campus & Credits Spring 2010 to 2014.....	3
Figure 4 Enrollment by State of Origin Spring 2010 to 2014	4
Figure 5 Enrollment Full Time Spring 2010 to 2014.....	4
Figure 6 Enrollment Student Type and Progression Spring 2014	5
Figure 8 Course Completion and Withdrawals Spring 2010 to 2014.....	6
Figure 9 Academic Good Standing Spring 2014 by Campus and Spring 2010 to 2014.....	6
Figure 10 Graduates Spring 2014 by Campus and State of Origin.....	7
Figure 11 Graduates Spring 2014 by Gender	7
Figure 12 Graduates Spring 2014 by Age.....	7

Table 1 Enrollment and Credits Spring 2014	1
Table 2 Enrollment Full Time, Gender and State of Origin Spring 2014.....	2
Table 3 Enrollment by Gender and Campus	3
Table 4 Enrollment by Campus Spring 2010 to 2014.....	3
Table 5 Enrollment by State of Origin Spring 2010 to 2014	4
Table 6 Progression information Spring 2014.....	5
Table 7 Sections, Enrollment & Class Size.....	5
Table 8 Course Completion Spring 2010 to 2014	6
Table 9 Enrollment and Additional Information by Major.....	9
Table 10 Course Completion by Program	10
Table 11 Graduates by Major Spring semester 2014.....	11

Enrollment and Credits Spring 2014

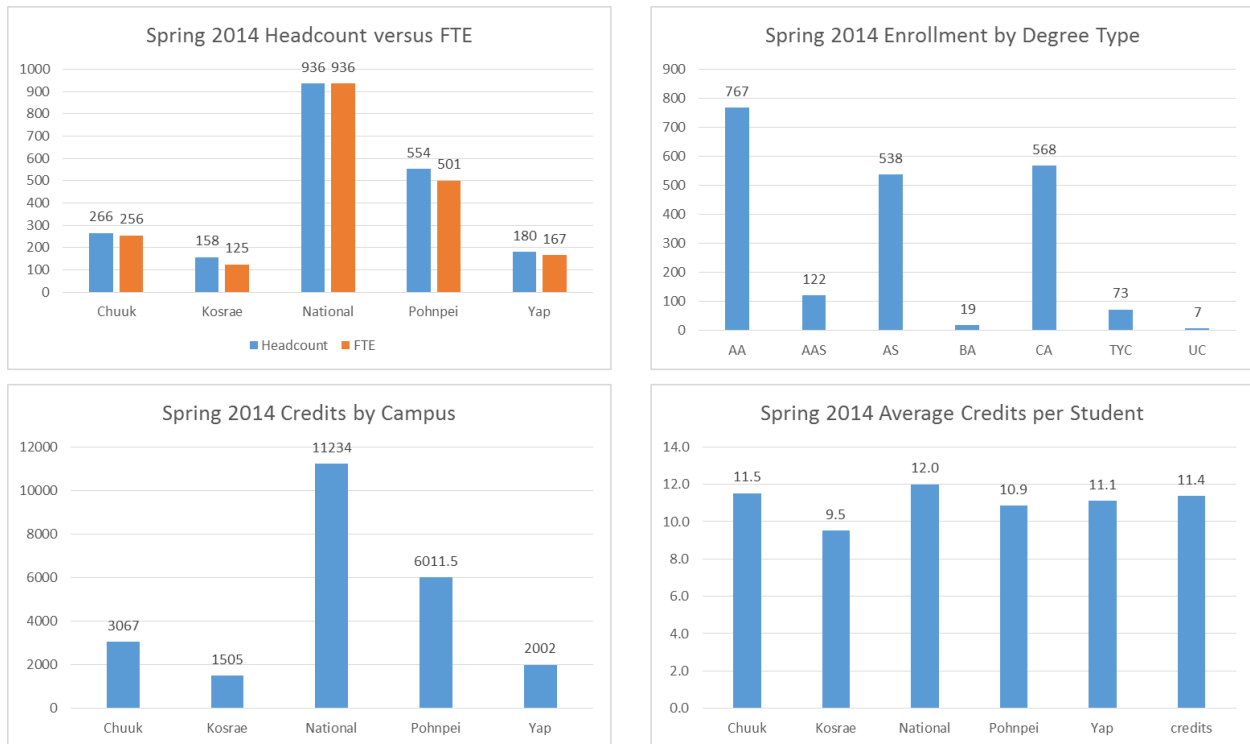


Figure 1 Enrollment & Credits Spring 2014

For Spring semester 2014, there were a total of 2094 students attending the college with a Full Time Equivalence (FTE)¹ of 1985 students. Headcount and credits for Spring semester 2014 followed similar distribution patterns. By headcount, 13% of students attended Chuuk Campus, 8% attended Kosrae Campus, 45% attended the National Campus, 26% attended Pohnpei Campus and 9% attended Yap Campus. Students signed up for 23,819.5 credits with National Campus students taking 47% of all credits. Attendance at the FSM Fisheries and Maritime Institute (FMI) is provided at the end of this report.

Average credits per student varied from a low of 9.5 credits/student at Kosrae to a high of 12.0 credits per student at the National Campus.

Table 1 provides a comparison of the headcount versus FTE at each campus for Spring semester 2014. Tabled

Table 1 Enrollment and Credits Spring 2014

enrollment	Chuuk	Kosrae	National	Pohnpei	Yap	total
Headcount	266	158	936	554	180	2094
FTE	256	125	936	501	167	1985

¹ Full Time Equivalence (FTE) - total credits divided by 12 credits (full time load).

Full Time Students, Gender and State of Origin

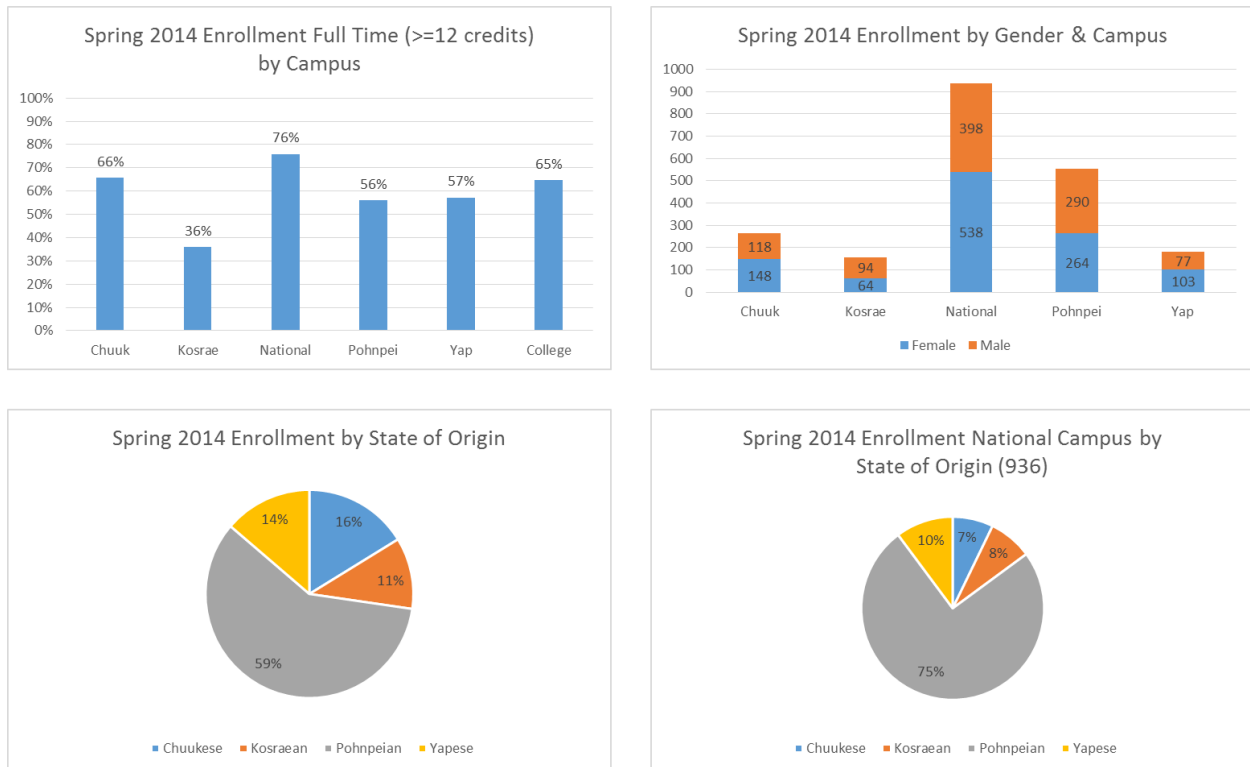


Figure 2 Enrollment by Full Time, Gender and State of Origin Spring 2014

Full time (student taking 12 or more credits) ranged from a low of 36% of students full time at Kosrae campus to a high of 76% full time students at the National campus. Overall, 65% of students were full time at the college for Spring semester 2014.

Pohnpeians represent 59% of all students and 75% of students at the National campus. Chuukese while representing 47% of the overall FSM population, represent only 16% of students in the college and 7% of students at the National campus.

Table 2 Enrollment Full Time, Gender and State of Origin Spring 2014

stateOrigin	Chuuk	Kosrae	National	Pohnpei	Yap	Students
Chuukese	265		67	6		338
Kosraean		156	72	3		231
Pohnpeian	1	2	698	528		1229
Yapese			95	12	179	286
Other	0	0	4	5	1	10
Students	266	158	936	554	180	2094

Enrollment by gender varies considerable across the campuses as shown in table 3. For the college, females represent 53% of the total student population with males at 47% percent. At Kosrae campus, 59% of students are male with 41% female. Yap and the National campus are the opposite with 57% of students' female and 43% male.

Table 3 Enrollment by Gender and Campus

gender	Chuuk	Kosrae	National	Pohnpei	Yap	total
Female	56%	41%	57%	48%	57%	53%
Male	44%	59%	43%	52%	43%	47%
Students	100%	100%	100%	100%	100%	100%

Enrollment and Credits Comparison Spring 2010 to 2014

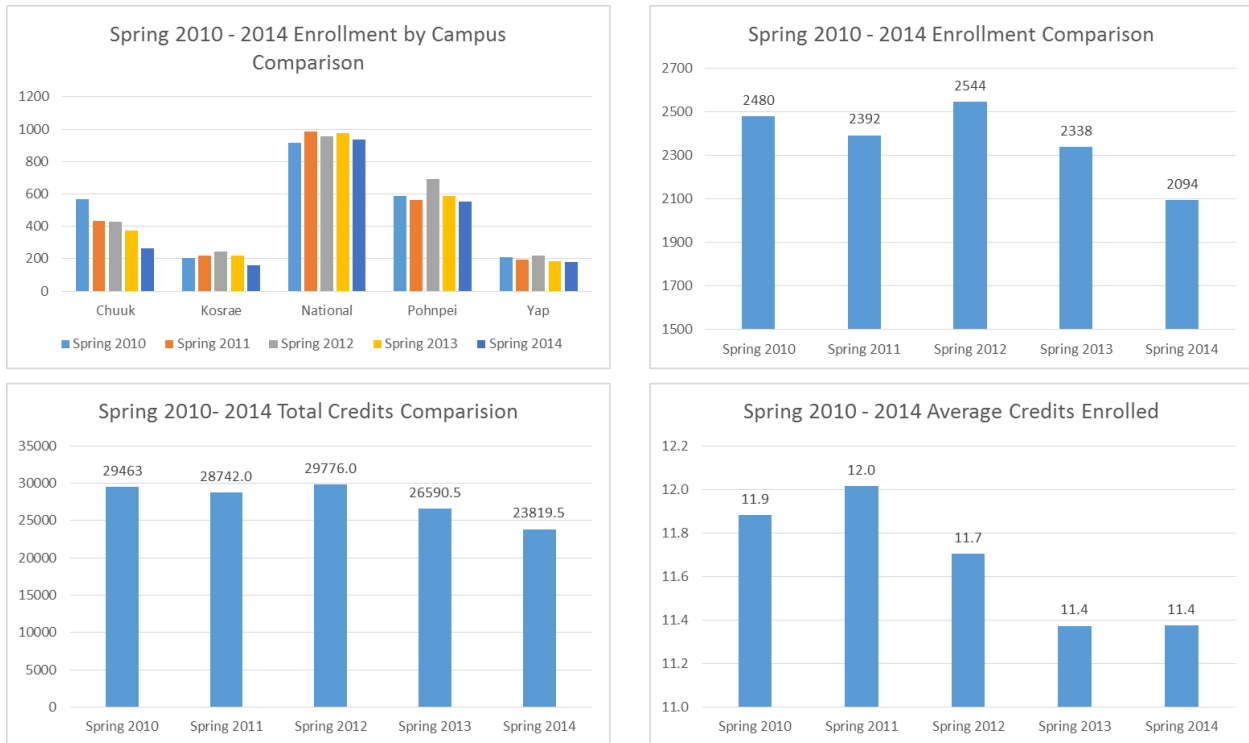


Figure 3 Enrollment by Campus & Credits Spring 2010 to 2014

Figure 3 provides comparison data from Spring semester 2010 to Spring semester 2014 for enrollment by campus and the college and also credit comparisons. Student headcount has seen an 18% decline from Spring semester 2012 to Spring semester 2014 with a 20% decline in credits. Average credits has been in decline for threes, but did level off at 11.4 credits for students in Spring semesters 2013 and 2014.

Table 4 provides detail of headcounts of students by campus from Spring semester 2010 to 2014.

Table 4 Enrollment by Campus Spring 2010 to 2014

term	Chuuk	Kosrae	National	Pohnpei	Yap	Students
Spring 2010	565	202	918	586	209	2480
Spring 2011	433	219	984	561	195	2392
Spring 2012	428	244	958	693	221	2544
Spring 2013	372	217	976	587	186	2338
Spring 2014	266	158	936	554	180	2094

Enrollment by State of Origin Spring 2010 to 2014

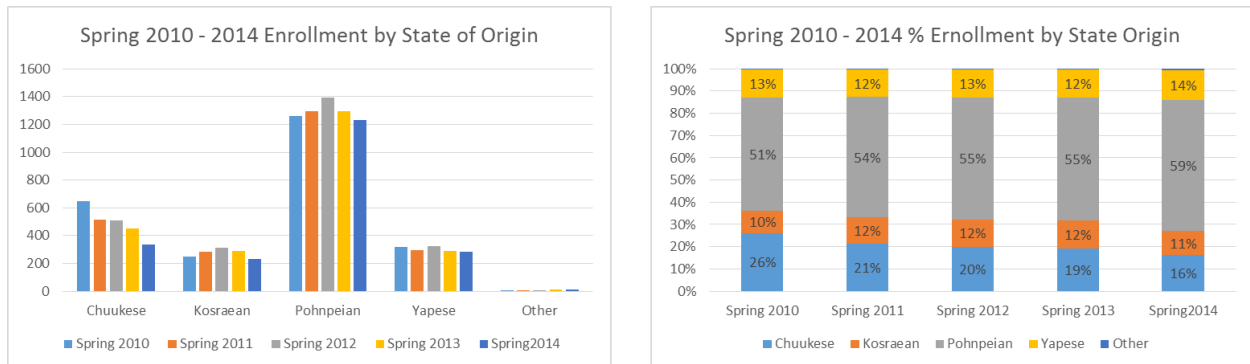


Figure 4 Enrollment by State of Origin Spring 2010 to 2014

Figure 4 and table 5 shown trends in enrollment by state of origin. Of note is the increase in Pohnpeians from 51% of total Spring enrollment in 2010 to 59% of total Spring enrollment in 2014. For Chuukese, there has been a decline from 26% of total Spring enrollment in 2010 to its current level of 16% in Spring 2014.

Table 5 Enrollment by State of Origin Spring 2010 to 2014

State Origin	Spring 2010	Spring 2011	Spring 2012	Spring 2013	Spring 2014
Chuukese	648	512	510	450	338
Kosraean	250	281	312	292	231
Pohnpeian	1260	1298	1394	1295	1229
Yapese	318	294	322	291	286
Other	4	7	6	10	10
Total	2480	2392	2544	2338	2094

Full Time Students Comparison Spring 2010 to 2014

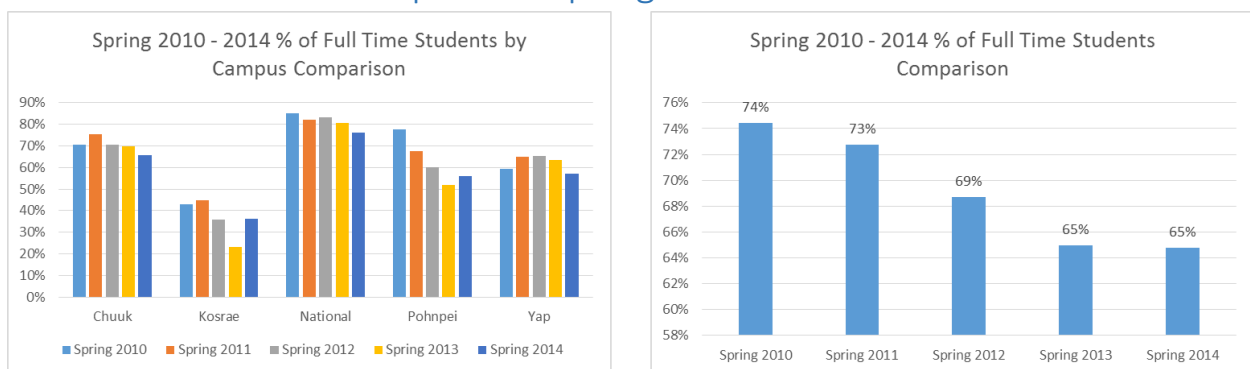


Figure 5 Enrollment Full Time Spring 2010 to 2014

Figure 5 shows the comparison of percent of full time students from spring 2010 to spring 2014 by campus and for the college. From Spring 2010 to Spring 2013 there was a 12% decline in percent of full time students, but Spring 2014 does show a leveling off of the decline at 65%.

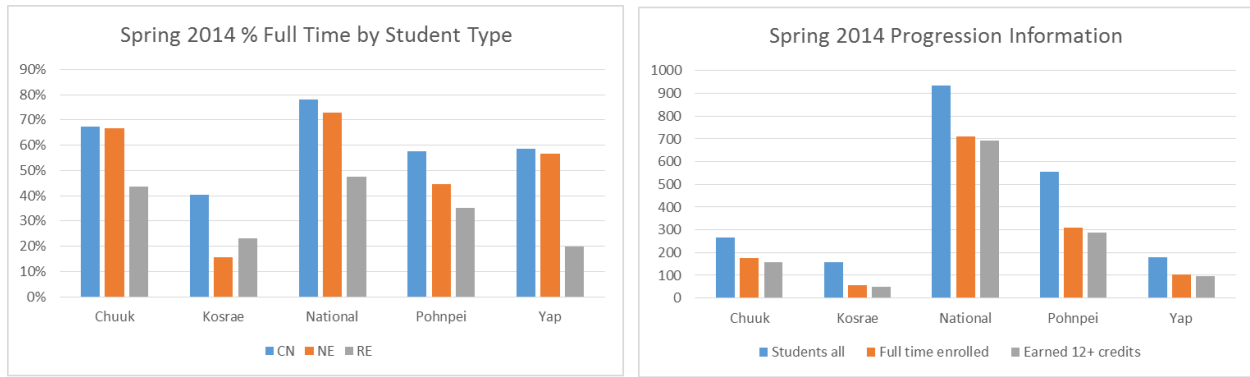


Figure 6 Enrollment Student Type and Progression Spring 2014

Figure 6 and table 6 show breakdown of full time students by student type (CN – continuing, NE – new, RE – returning) as well as information on percent of students who earned 12 or more credits in Spring 2014. Earning 12 credits each semester is a good sign the students are making progress that will allow them to graduate in a timely manner (3 years for an associate’s degree).

Table 6 Progression information Spring 2014

student status	Chuuk	Kosrae	National	Pohnpei	Yap	total
Students all	266	158	936	554	180	2094
Full time enrolled	175	57	711	310	103	1356
Earned 12+ credits	159	51	691	289	95	1285
% fulltime	66%	36%	76%	56%	57%	65%
% earned 12+ credits	91%	89%	97%	93%	92%	95%
% earned 12+ credits total enrollment	60%	32%	74%	52%	53%	61%

Section Data

Table 7 provides a summary of total sections offered at each campus, maximum possible enrollment, actual enrollment, enrollment ratio (actual enrollment divided by maximum possible enrollment) and average class size (actual enrollment divided by number of sections). Enrollment ratios vary from a low of 57% at Kosrae campus to a high of 88% at Pohnpei campus.

Table 7 Sections, Enrollment & Class Size

campus	sections	enrollMax	enroll	enrolRatio	AvgClassSize
Chuuk	64	1491	966	65%	15.1
Kosrae	34	820	468	57%	13.8
National	197	4320	3619	84%	18.4
Pohnpei	99	2099	1837	88%	18.6
Yap	42	939	617	66%	14.7
College	436	9669	7507	78%	17.2

Course Completion and Withdrawal Rates Spring 2010 to 2014

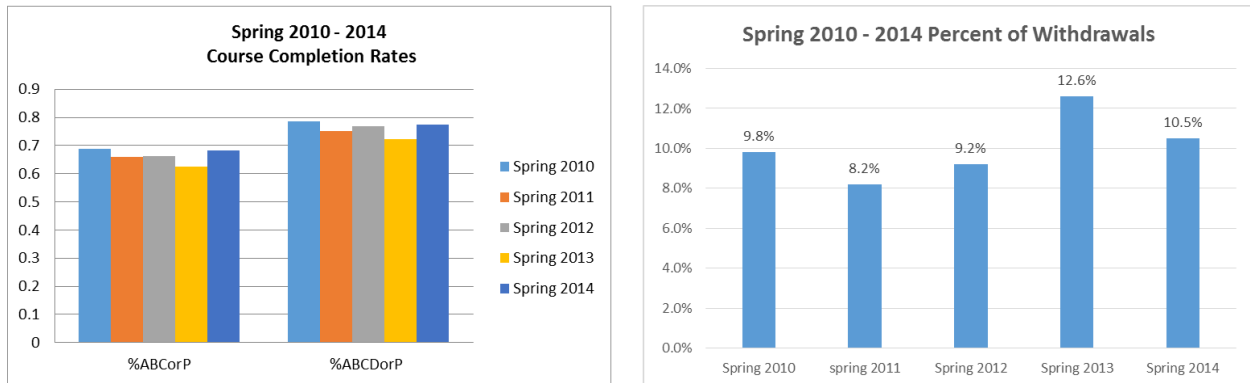


Figure 7 Course Completion and Withdrawals Spring 2010 to 2014

Figure 8 and table 8 show course completion information as well as percent of withdrawals. Spring semester 2014 did see increases in student's earning an A, B, C or P grade from 62.5% to 68.3%. There was also a decrease in the withdrawal rate from spring 2013 to spring 2014 of 2.1%. Detail information on course completion can be found on the IRPO web site <http://www.comfsm.fm/?q=irpo-trends/>. Also, course completion by program can be found in table 10.

Table 8 Course Completion Spring 2010 to 2014

completion	Spring 2010	Spring 2011	Spring 2012	Spring 2013	Spring 2014
%ABCorP	68.7%	65.9%	66.2%	62.5%	68.3%
%ABCDorP	78.5%	75.3%	76.8%	72.4%	77.5%

Academic Standing

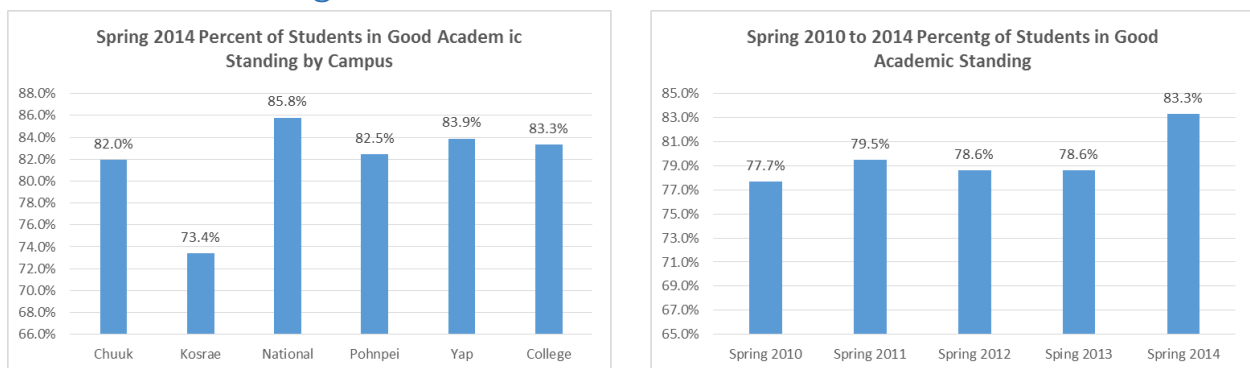


Figure 8 Academic Good Standing Spring 2014 by Campus and Spring 2010 to 2014

Figure 9 provides information on spring semester 2014 students in good academic standing (GPA of 2.0 or greater) and comparison data for the last five years. The percent of students in good academic standing increased to 83.3% in spring semester 2014 - its highest rate in the past 5 years.

Graduates Spring 2014

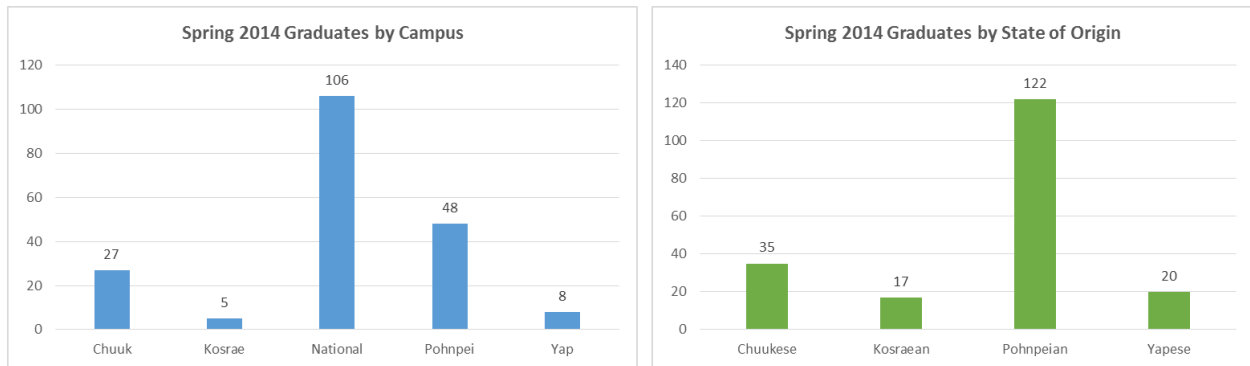


Figure 9 Graduates Spring 2014 by Campus and State of Origin

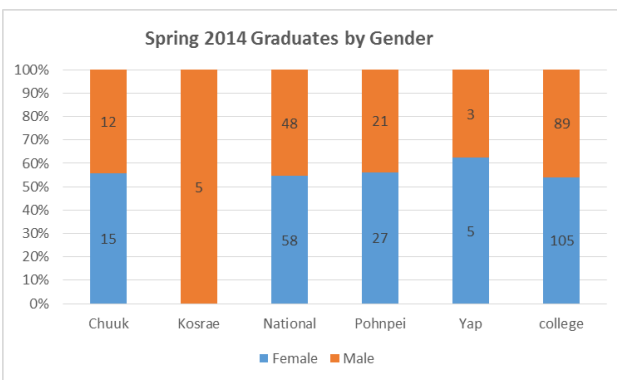


Figure 10 Graduates Spring 2014 by Gender

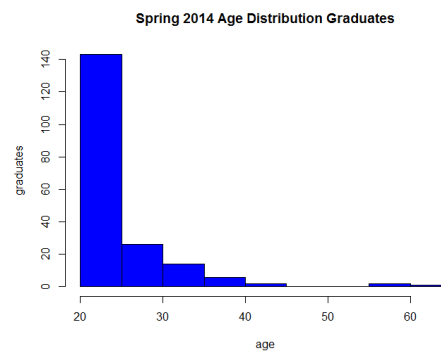


Figure 11 Graduates Spring 2014 by Age

Figure 10 provides data on graduates in spring semester 2014 by campus, state of origin, gender and age distribution. There were 194 graduates across all campuses with 55% of graduates from the National campus. Pohnpeian represented 63% of graduates. Figure 10 shows gender 54% of graduates were female and 46% male.

As with our overall student population, graduates tend to be young with a median age of 23 and a mean age of 25. Graduates ages ranged from the youngest at 20 year to the oldest at 62. Seventy-five percent of graduates were 26 years old or younger.

Table 10 provides a listing of graduates in Spring semester 2014 by major.

FSM Fisheries and Maritime Institute (FMI)

The following tables provide information on FMI enrollment, state of origin and graduates for AY 2013/14. 53 students are attending FSM with 29 students graduating this Spring semester. Enrollment by state of origin show 24% Chuukese, 11% Kosraean, 30% Pohnpeian, and 34% Yapese.

Enrollment by Major and Year

	Fall 2013	Spring 2014
Programs 1st Year Students		
Fishing	5	6
Navigation	16	15
Marine Engineering	3	3
Total 1st Year Students	24	24
Programs 2nd Year Students		
Fishing	15	15
Navigation	8	8
Marine Engineering	6	6
Total 2nd Year Students	29	29
Total FMI Students	53	53

Enrollment by State of Origin	Chuukese	Kosraean	Pohnpeian	Yapese	Total
1st Year Fall 2013	5	6	4	9	24
2nd Year Fall 2013	8	0	12	9	29
Total Fall 2013	13	6	16	18	53

Enrollment by State of Origin	Chuukese	Kosraean	Pohnpeian	Yapese	Total
1st Year Spring 2014	5	6	4	9	24
2nd Year Spring 2014	8	0	12	9	29
Total Spring 2014	13	6	16	18	53

FSM FMI Graduates AY 2013-14					
Program/State of Origin	Chuukese	Kosraean	Pohnpeian	Yapese	Total
Fishing	4	0	8	3	15
Navigation	3	0	3	2	8
Marine Engineering	1	0	1	4	6
Totals Graduates	8	0	12	9	29

Table 9 Enrollment and Additional Information by Major

term	major	degree	students	avgCrenrol	avgCRAtt	avgCReamed	avgTermGPA	avgCumGPA	Students
Spring 2014	Teacher Preparation	AA	315	11.5	9.9	8.9	2.28	2.71	15.0%
Spring 2014	Liberal Arts	AA	240	11.4	9.7	8.2	2.02	2.48	11.5%
Spring 2014	Business Administration	AS	192	11.9	10.2	8.8	2.15	2.58	9.2%
Spring 2014	Bookkeeping	CA	165	11.2	9.5	8.3	2.03	2.27	7.9%
Spring 2014	Agriculture and Food Technology	CA	142	10.9	9.3	8.2	2.44	2.39	6.8%
Spring 2014	Computer Information Systems	AS	128	12.2	10.4	8.7	2.06	2.63	6.1%
Spring 2014	Health Career Opportunities Program	AA	117	13.0	11.5	9.9	2.15	2.56	5.6%
Spring 2014	Micronesian Studies	AA	101	11.6	10.5	9.6	2.28	2.66	4.8%
Spring 2014	Electronics Technology	AAS	63	11.9	11.3	10.6	2.37	2.70	3.0%
Spring 2014	Secretarial Science	CA	57	10.7	9.5	7.8	2.06	2.26	2.7%
Spring 2014	Hospitality and Tourism Management	AS	50	11.2	10.6	9.7	2.40	2.59	2.4%
Spring 2014	Telecommunications	AAS	46	11.0	10.4	9.7	2.57	2.75	2.2%
Spring 2014	Electronic Engineering Technology	CA	44	9.6	8.6	7.0	1.79	2.29	2.1%
Spring 2014	Nursing	AS	43	11.1	9.0	7.6	2.36	2.61	2.1%
Spring 2014	Ag. & Nat. Res. Management	AS	42	12.3	11.2	9.8	2.11	2.64	2.0%
Spring 2014	Marine Science	AS	42	12.5	11.0	9.3	1.92	2.33	2.0%
Spring 2014	Teacher Preparation - Elementary	TYC	39	11.4	10.3	10.1	2.78	3.03	1.9%
Spring 2014	Public Health	AS	28	12.4	11.6	10.6	2.17	2.66	1.3%
Spring 2014	Construction Electricity	CA	27	11.2	9.9	8.7	2.06	2.47	1.3%
Spring 2014	Basic Public Health	CA	24	9.0	7.6	6.4	1.52	1.86	1.1%
Spring 2014	Elementary Education	BA	20	10.2	10.0	10.0	3.37	3.25	1.0%
Spring 2014	Building Technology	AAS	19	10.8	9.8	9.1	2.63	2.75	0.9%
Spring 2014	Cabinet Making/Furniture Making	CA	19	9.9	9.3	8.5	2.17	2.63	0.9%
Spring 2014	Refrigerator and Air Conditioning	CA	17	9.9	6.2	5.4	1.85	2.24	0.8%
Spring 2014	Career Education: Motor Vehicle Mechanic	CA	16	11.5	9.3	7.8	1.90	2.21	0.8%
Spring 2014	Public Health	TYC	14	11.4	10.7	9.9	2.03	2.68	0.7%
Spring 2014	Trial Counselor	CA	14	9.6	7.4	6.9	2.07	2.75	0.7%
Spring 2014	Carpentry	CA	12	10.5	9.7	8.0	2.23	2.62	0.6%
Spring 2014	General Business	TYC	12	8.5	8.3	8.3	3.50	2.76	0.6%
Spring 2014	Accounting	TYC	11	9.5	9.5	9.5	3.75	2.92	0.5%
Spring 2014	Health Assistant Training Program	CA	9	9.3	8.8	8.8	2.58	2.64	0.4%
Spring 2014	Teacher Education - Elementary	AS	8	9.1	8.8	8.8	2.96	2.86	0.4%
Spring 2014	Unclassified	UC	7	4.0	0.4	0.4	0.57	0.57	0.3%
Spring 2014	Agriculture	AS	6	11.0	10.5	10.0	2.70	2.64	0.3%
Spring 2014	Building Maintenance and Repair	CA	3	5.0	1.3	1.3	1.00	2.38	0.1%
Spring 2014	Business Administration	TYC	1	9.0	9.0	9.0	3.67	2.75	0.0%
Spring 2014	Nursing Assistant	CA	1	12.0	3.0	3.0	2.00	2.48	0.0%

Table 10 Course Completion by Program

program	students	%ABCorP	%ABCDorP	%W
Accounting (3rd Year)	13	100.0%	100.0%	0.0%
Achieving College Excellence (ACE)	123	71.7%	71.7%	7.5%
Agriculture and Food Technology (CA)	279	73.8%	77.8%	9.7%
Agriculture and Natural Resources (AS)	93	84.9%	94.6%	1.1%
BA	43	97.7%	100.0%	0.0%
Bookkeeping (CA)	517	54.7%	66.9%	12.8%
Business Administration (AS)	379	78.4%	82.8%	8.7%
Cabinet Making (CA)	44	95.5%	95.5%	4.5%
Carpentry (CA)	40	87.5%	87.5%	2.5%
Community Health Services (CA)	7	100.0%	100.0%	0.0%
Computer Information Systems (CIS)	226	62.4%	80.1%	11.9%
Construction Electricity (CA)	87	78.2%	81.6%	5.7%
Electronic Engineering Technology (CA)	149	71.6%	85.1%	0.0%
Electronic Technology (AAS)	109	89.0%	91.7%	3.7%
General Education	2371	64.6%	73.7%	12.8%
Hospitality and Tourism Management (AS)	86	75.6%	86.0%	9.3%
independent study	2	100.0%	100.0%	0.0%
instruction pre-requisite course	576	58.0%	70.0%	17.9%
LA/HCOP (AA)	344	54.7%	68.9%	16.3%
Liberal Arts (AA)	443	70.4%	80.1%	7.4%
Marine Science (AS)	72	58.3%	80.6%	6.9%
Micronesia Studies (AA)	339	75.2%	85.0%	7.7%
Motor Vehicle Mechanics (CA)	16	75.0%	75.0%	12.5%
Nursing (AS)	33	72.7%	75.8%	0.0%
Pre-Teacher Preparation (AA)	391	80.8%	88.5%	5.4%
Public Health (3rd Year)	57	70.2%	87.7%	0.0%
Public Health (AS)	108	64.8%	77.8%	10.2%
Refrigeration and Air Condition (CA)	24	54.2%	58.3%	25.0%
Secretarial Science (CA)	32	87.5%	90.6%	6.3%
Teacher Preparation – Elementary (3rd Year)	113	84.1%	85.8%	8.0%
Telecommunications (AAS)	55	85.5%	90.9%	7.3%
Trial Counselors (CA)	38	73.7%	78.9%	7.9%
Unassigned	202	75.2%	84.7%	8.4%
College	7411	68.3%	77.5%	10.6%

Table 11 Graduates by Major Spring semester 2014

term	major	degree	graduates	%
Spring 2014	Teacher Preparation	AA	34	17.5%
Spring 2014	Liberal Arts	AA	25	12.9%
Spring 2014	Agriculture and Food Technology	CA	19	9.8%
Spring 2014	Computer Information Systems	AS	15	7.7%
Spring 2014	Micronesian Studies	AA	15	7.7%
Spring 2014	Business Administration	AS	11	5.7%
Spring 2014	Teacher Preparation - Elementary	TYC	8	4.1%
Spring 2014	Bookkeeping	CA	8	4.1%
Spring 2014	Telecommunications	AAS	8	4.1%
Spring 2014	Hospitality and Tourism Management	AS	6	3.1%
Spring 2014	Health Career Opportunities Program	AA	6	3.1%
Spring 2014	Teacher Education - Elementary	AS	6	3.1%
Spring 2014	Marine Science	AS	5	2.6%
Spring 2014	Electronics Technology	AAS	5	2.6%
Spring 2014	Electronic Engineering Technology	CA	3	1.5%
Spring 2014	Public Health	TYC	3	1.5%
Spring 2014	Refrigerator and Air Conditioning	CA	3	1.5%
Spring 2014	Secretarial Science	CA	3	1.5%
Spring 2014	Ag. & Nat. Res. Management	AS	3	1.5%
Spring 2014	Accounting	TYC	2	1.0%
Spring 2014	Construction Electricity	CA	2	1.0%
Spring 2014	Cabinet Making/Furniture Making	CA	2	1.0%
Spring 2014	Public Health	AS	1	0.5%
Spring 2014	Health Assistant Training Program	CA	1	0.5%
	Percent		194	100.0%